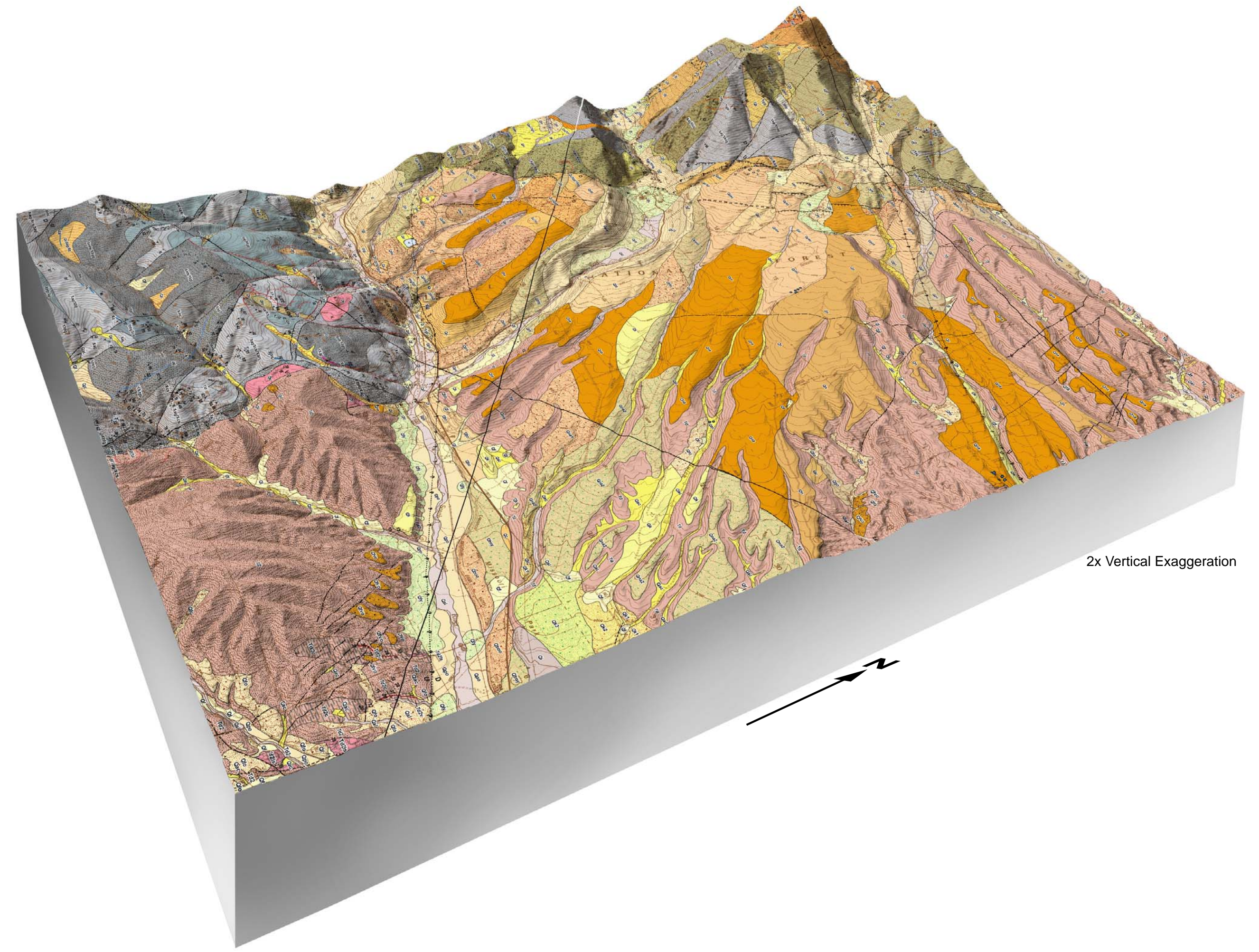
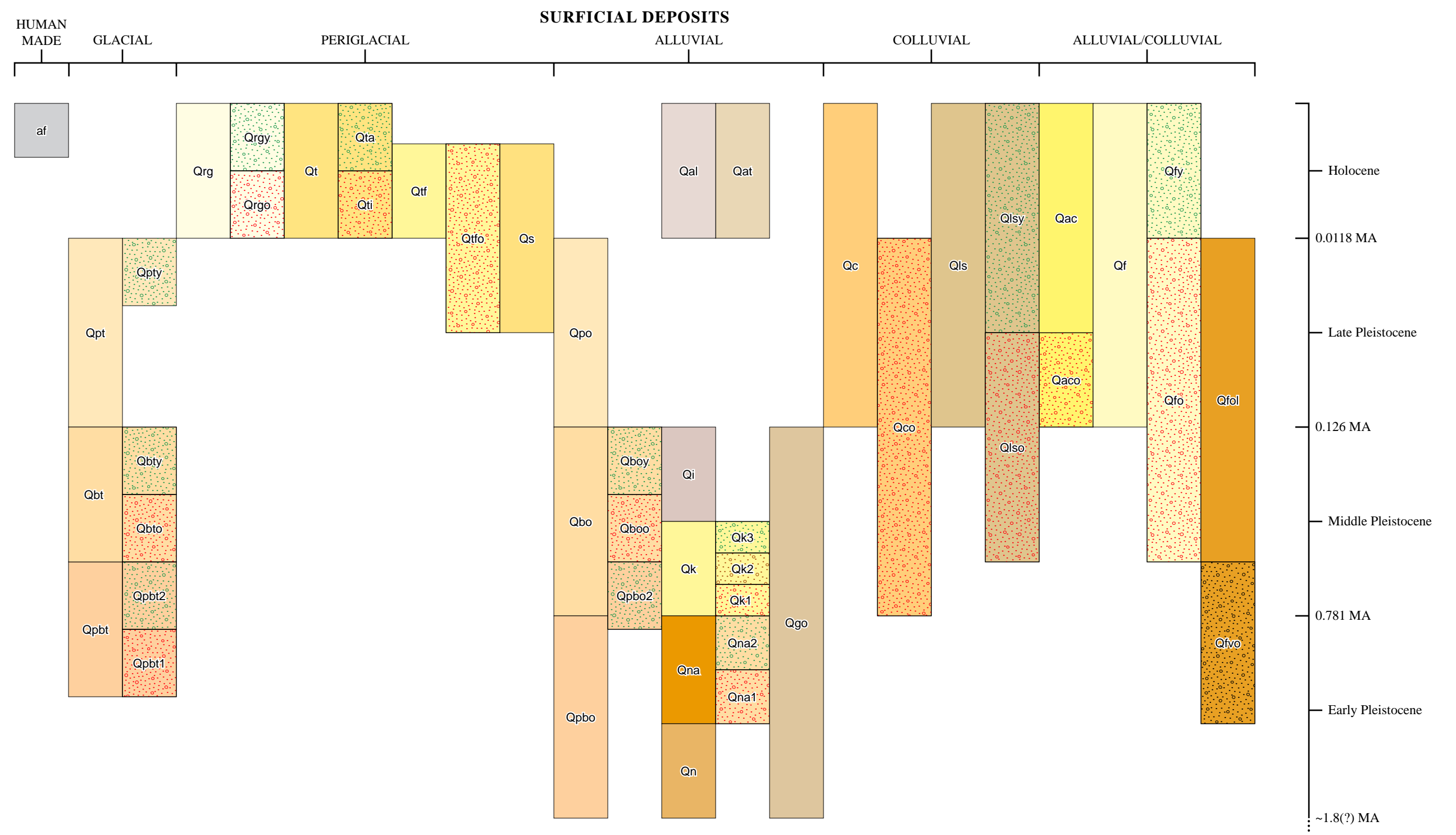
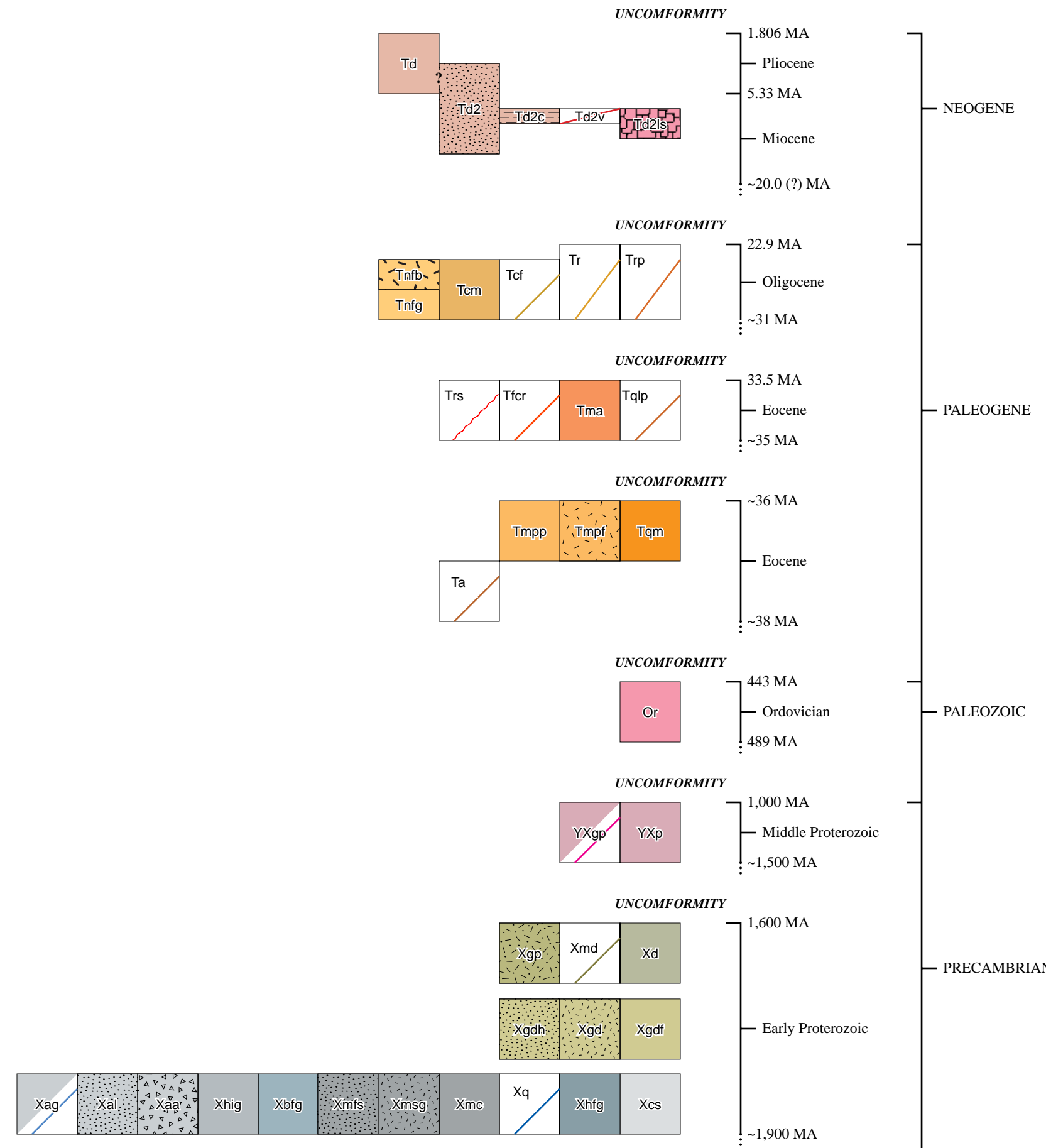


CORRELATION OF MAP UNITS

3-D OBLIQUE VIEW



BEDROCK UNITS



MAP COMPONENTS TO ACCOMPANY THE
GEOLOGIC MAP OF THE MAYSVILLE QUADRANGLE, CHAFFEE COUNTY, COLORADO

By James R. Shannon and James P. McCalpin
2006



Bill Ritter Jr., Governor
State of Colorado
Harris D. Sherman, Executive Director
Department of Natural Resources
Vincent Matthews
State Geologist and Division Director
Colorado Geological Survey